

INFORMATION FOR PATIENTS



Current Entry Measures for Czech Republic

1. All travelers must fill out a [Passenger Locator Form](#) before arrival.
2. Upon entry, all travelers must present one of the following:
 - > negative PCR test not older than 72 hrs. OR
 - > negative AG test not older than 24 hrs. OR
 - > vaccination certificate OR
 - > certificate about recovery from COVID-19
3. Travelers who arrive from non-EU countries must undergo a PCR test between the 5th – 7th day after arrival.

Note: If you are traveling by **individual transportation** (such as your own car) AND you are an EU citizen, family member of an EU citizen or resident in the EU, the entry rules stated above do not apply to you.

Up-to-date information from the Ministry of Health of the Czech Republic (MZČR) can be found [here](#).



Coronavirus Pandemic

Cancer treatment, check-ups, and diagnostic examinations continue without restriction at the Proton Therapy Center.



Protective Measures

Everyone entering the Proton Therapy Center is required to wear a respirator without an exhalation valve with a protection class of at least FFP2 OR a nano mask. If a patient doesn't have suitable protective equipment, we can provide them with a nano mask upon arrival to the facility. The safety of our patients and staff is our top priority.



Do Not Delay Your Medical Examinations

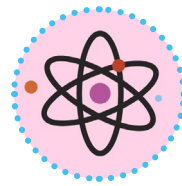
Remember that early diagnosis and regular check-ups are key factors in the success of treatment and can help prevent complications. When all safety measures are respected, visiting a doctor carries a very low risk of COVID-19 infection.



What to Do if You Notice Any Symptoms Typical of COVID-19 While in Prague

Please contact your treatment coordinator via e-mail or phone. They will arrange a phone consultation with your treating doctor at the Proton Therapy Center, who will check if your symptoms may be related with cancer treatment.

Should the doctor suspect that your symptoms may be caused by COVID-19, they will send you for an antigen or PCR test.



How COVID-19 Positive Patients Are Treated (For Their Cancer)

Patients who are positive with COVID-19 are always treated and examined at the end of PTC's working hours. They enter the building through the entrance on the 1st floor, as opposed to healthy patients who enter through the main entrance on the 5th floor. Here, a receptionist from the 2nd floor meets the infected patients and provides them with a FFP3 respirator without an exhalation valve and a disposable gown. All patients must properly disinfect their hands. COVID-19 positive patients are cared for by dedicated staff members, who are never in contact with healthy patients. We do our best to ensure that infected patients never come in contact with other employees or healthy patients.

If the patient's health conditions require it, cancer treatment is postponed for as long as necessary. Continuation of cancer treatment is always determined by the agreement between the patient and their treating doctor.